



**RADIAL OTR TIRE
PATTERN DESIGNS**



2008 V2.0

Techking Tires Limited is determined to be a professional OTR tires solution provider. Thanks to its strong engineering sources integration capacity, Techking offers the most complete radial OTR tire line in China, covering the application for loader, dozer, ADT, rigid dumper, crane, port, underground mining.

Techking attaches the greatest importance to product quality through building partnership with best-in-class suppliers. Techking sources all its steel cord from Bekaert of Belgium, the natural rubber only from Malaysia or Thailand origin, only SMR grade and the carbon black only from Cabot, USA.



Techking wishes to build win-win cooperation with selective top industry players in each territory. Instead of soliciting orders from whoever can place an order, Techking selects the right partners and supports each other to win a better position in the industry. Techking develops different programs for and interacts intensively with its partners to grow together.

With the products sold to 55 countries in the world, Techking Tires Limited has been proving its commitment and capability with many influential overseas partners. Techking has been also serving OE partners such as **NOXY** (Norway), **DELTA** (South Africa), **LIEBHERR** (Germany), **VOEGELE** (Germany) and **LINDEMANN** (Sweden). For more information, please visit the website at www.techkingtires.com

Techking, the professional OTR tire solution provider.



The super-deep, smooth Techking L5S designed with maximum wear and reliability for wheel loaders and haulers working in severe mines, quarries and waste-handling-conditions.

Tire Size	TRA Code	Star Rating	TD (mm)	ISO Index	Stuffing Qty/40HQ
17.5R25	L5S	★★	76.5	182 A2	84
20.5R25	L5S	★★	76.5	193 A2	60
23.5R25	L5S	★★	88.5	201 A2	35
26.5R25	L5S	★★	100.5	209 A2	27
29.5R25	L5S	★★	110.5	216 A2	24
29.5R29	L5S	★★	110.5	218 A2	24
35/65R33	L5S	★★	97	224 A2	20
18.00R25	L5S	★★	93.5	204 A2	44

***Compound Option: C1**

ETSM™



ETDL5™



The ETDL5 is perfect for heavy-duty operations in open pits, quarries and underground mines.

The sidewalls provide extended protection from cutting.

Tire Size	TRA Code	Star Rating	TD (mm)	ISO Index	Stuffing Qty/40HQ
17.5R25	L5	★★	66.5	182 A2	84
20.5R25	L5	★★	76.5	193 A2	60
23.5R25	L5	★★	85.5	201 A2	35
26.5R25	L5	★★	94.5	209 A2	27
29.5R25	L5	★★	102.5	216 A2	25
29.5R29	L5	★★	102.5	218 A2	24
35/65R33	L5	★★	95.5	224 A2	20

***Compound Option: C1**



ETLDD2™



The directional radial tires for wheel loaders designed to provide high levels of stability, traction and protection combined with a cushioned ride for operator comfort.

Tire Size	TRA Code	Star Rating	TD (mm)	ISO Index	Stuffing Qty/40HQ
20.5R25	L5	★★	72	193A2	60
23.5R25	L5	★★	76.5	201A2	35
26.5R25	L5	★★	85.5	209A2	27
29.5R25	L5	★★	93.5	216A2	25
29.5R29	L5	★★	93.5	218A2	24
35/65R33	L5	★★	95.5	224A2	20

***Compound Option: C1**



ETMINE™



This rugged Techking extra-deep tread (L5) ETMINE designed to give the vehicles maximum protection in severe hard rock quarries, underground mines, scrap and solid-waste treatment.

Tire Size	TRA Code	Star Rating	TD (mm)	ISO Index	Stuffing Qty/40HQ
26.5R25	L5	★★	89.5	209 A2	27

***Compound Option: C1**



ETNT™



The Techking new ETNT is designed for shuttle truck in underground mine.

Tire Size	TRA Code	Star Rating	TD (mm)	ISO Index	Stuffing Qty/40HQ
26.5R25	E4/L4	★★	55.5	193 B 209 A2	35
29.5R25	E4/L4	★★	55.5	200 B 216 A2	25
29.5R29	E4/L4	★★	60	202 B 218 A2	24
35/65R33	E4/L4	★★	62.5	207 B 224 A2	20

***Compound Option: H2, C1.**



ETDL™



The ETDL radial tires designed for severe and rocky surfaces guarantee good traction, stability and comfortable ride.

Tire Size	TRA Code	Star Rating	TD (mm)	ISO Index	Stuffing Qty/40HQ
23.5R25	L4	★★	49.5	201A2	44
26.5R25	L4	★★	58.5	209A2	35

***Compound Option: C1**

⚠ Not for underground



ETADT™



The ETADT pattern provides great traction and floatation, operation comfort and less vehicle damage.

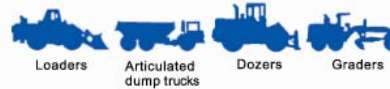
Tire Size	TRA Code	Star Rating	TD (mm)	ISO Index	Stuffing Qty/40HQ
23.5R25	E4	★★	47	185B	— 44
26.5R25	E4	★★	52.5	193B	— 35
29.5R25	E4	★★	55.5	200B	— 25
29.5R29	E4	★★	59.5	202B	— 24
16.00R25	E4	★★	41.5	177B	— 80
600/65R25	E3/L3	★★	34	178B	187 A2 —
650/65R25	E3/L3	★★	37	180B	193 A2 —
750/65R25	E3/L3	★★	43	190B	202 A2 —
850/65R25	E3/L3	★★	47	196B	207 A2 —
875/65R29	E3/L3	★★	51	203B	214 A2 —

***Compound Option: H2, C1.**

⚠ Not for underground



ET6A™



The Techking L3/E3 radial tires for articulated trucks designed to deliver exceptional reliability in a variety of applications.

Tire Size	TRA Code	Star Rating	TD (mm)	ISO Index	Stuffing Qty/40HQ
23.5R25	E3/L3	★★	32.5	185 B 201 A2	44
26.5R25	E3/L3	★★	35.5	193 B 209 A2	35
29.5R25	E3/L3	★★	42	200 B 216 A2	25
29.5R29	E3/L3	★★	43.5	202 B 218 A2	24

***Compound Option: C1, R1.**



ET5A™



The versatile E3/L3 radial tires designed for earthmovers, loaders and other equipment used in construction, stockpile and truck-loading applications.

Tire Size	TRA Code	Star Rating	TD (mm)	ISO Index	Stuffing Qty/40HQ
17.5R25	E3/L3	★★	26.5	167B 182 A2	90
20.5R25	E3/L3	★★	29.5	177B 193 A2	64
23.5R25	E3/L3	★★	32.5	185B 201 A2	44
26.5R25	E3/L3	★★	35.5	193B 209 A2	35

***Compound Option: R1**



ETSNOW™



The all-season Techking radial tires designed for use on graders, loaders and cranes where exceptional traction on snow and ice is required.

Tire Size	TRA Code	Star Rating	TD (mm)	ISO Index	Stuffing Qty/40HQ
15.5R25	E2/L2	★★	24	160B 176 A2	112
17.5R25	E2/L2	★★	26.5	167B 182 A2	90
20.5R25	E2/L2	★★	29.5	177B 193 A2	64
23.5R25	E2/L2	★★	32.5	185B 201 A2	44
26.5R25	E2/L2	★★	35.5	193B 209 A2	35
29.5R25	E2/L2	★★	42	200B 216 A2	25
16.00R25	E2	★★★	26.5	— 179 E	80

*** Compound Option: SNOW**

*** Crane application is for 16.00R25 only.**



ETDT™



The Techking extra deep E4 rigid dump truck tires, designed with an aggressive tread pattern that provide maximum traction in all underfoot conditions.

Tire Size	TRA Code	Star Rating	TD (mm)	ISO Index	Stuffing Qty/40HQ
18.00R33	E4	★★	52.5	191B	38
21.00R35	E4	★★	59.5	201B	30
24.00R35	E4	★★	66.5	209B	20

*** Compound Option: H2**



ETDR™



Rigid dumpers



Bottom dumpers

The radial E4 tires for haul trucks designed to deliver long life, maximum protection and excellent traction in the most severe mines and quarry conditions.

Tire Size	TRA Code	Star Rating	TD (mm)	ISO Index	Stuffing Qty/40HQ
18.00R33	E4	★★	52.5	191B	38
21.00R35	E4	★★	52.5	201B	30
24.00R35	E4	★★	56.5	209B	20

*** Compound Option: H2**



ETRT™



Logging trucks



Rigid dumpers



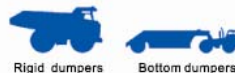
Bottom dumpers

The Techking E4 radial tires for dump trucks designed to provide excellent adhesion and traction in severe conditions.

14.00R25 is also designed particularly for logging trucks.

Tire Size	TRA Code	Star Rating	TD (mm)	ISO Index	Stuffing Qty/40HQ
14.00R25	E4	★★★	36.5	168B	116
18.00R25	E4	★★	45.5	185B	44

*** Compound Option: H2**



The Techking E4 radial tires for haul trucks operating at high speed designed to provide excellent protection and long wear in harsh conditions.

Tire Size	TRA Code	Star Rating	TD (mm)	ISO Index	Stuffing Qty/40HQ
18.00R25	E4	★★	45.5	185 B	44
18.00R33	E4	★★	47.5	191 B	38
21.00R33	E4	★★	51.5	200 B	28

***Compound Option: H2**

Note: The pattern of 21.00R33 is called ETHAUL+.

⚠ Not for port applications

ETHAUL™ / ETHAUL+™



The non-directional radial tires designed to deliver exceptional operator comfort and durability in high-speed and for on- and off-road crane applications.

Tire Size	TRA Code	Star Rating	TD (mm)	ISO Index	Stuffing Qty/40HQ
14.00R24 (385/95R24)	E2	★★★★	20.5	170F	120
14.00R25 (385/95R25)	E2	★★★★	20.5	170F	110
16.00R25 (445/95R25)	E2	★★★★	26.5	174F	80
17.5R25 (445/80R25)	E2	★★★★	26.5	170F	90
20.5R25 (525/80R25)	E2	★★★★	29.5	177F	64
18.00R25 (505/95R25)	E2	★★★★	26.5	186E	44

***Compound Option: H1**

Note: 14.00R24(385/95R24) ETGC is tube-type(TT).

ETGC™



ETGRADER™



The Techking ETGRADER (G2/L2) radial tires designed with aggressive, non-directional tread pattern to give graders maximum traction and grip capacity.

Tire Size	TRA Code	Star Rating	TD (mm)	ISO Index	Stuffing Qty/40HQ
14.00R24	G2/L2	★★	25	153 A8	120
16.00R24	G2/L2	★★	27	161 A8	86

*Compound Option: R1



ETPORTM™



The rugged radial tire designed for forklift trucks, terminal tractors and other industrial equipments used in heavy-duty applications.

Tire Size	TRA Code	Star Rating	TD (mm)	ISO Index	Stuffing Qty/40HQ
12.00R24	IND4	★★	40	178 A5	184
14.00R24	IND4	★★	61.5	193 A5	120
16.00R25	IND4	★★	69.5	200 A5	80
18.00R25	IND4	★★★	61.5	214 A5	44
18.00R33	IND4	★★★	71.5	219 A5	38

*Compound Option: H2, C1.



ETOT™



Logging trucks



Mining Trucks

The Techking new ETOT high capacity tube-type tires designed for mostly off-road application such as mining and logging. Massive tread blocks offer exceptional resistance to cuts and penetrations. Open shoulders designed for improved self-cleaning capability enhance soft soil mobility.

Tire Size	Ply Rating	TD (mm)	Tire Load Capacity		Speed Symbol	Stuffing Qty/40HQ
			Single/kg	Dual/kg		
12.00R24	20	32	4500	4000	F	184

***Compound Option: H1**

Note: ETOT is tube-type(TT).



ETFN™



Logging trucks



Mining Trucks

The ETFN is designed for both on road and off road conditions. Its heat-resistance design supports the high speed application.

Tire Size	Ply Rating	TD (mm)	Tire Load Capacity		Speed Symbol	Stuffing Qty/40HQ
			Single/kg	Dual/kg		
12.00R24	20	22	4750	4500	K	184

***Compound Option: H1**



ETMPT1™



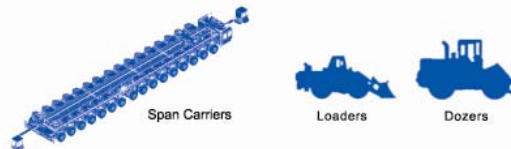
The open and non-directional pattern is designed for all-round application on and off the road. The open face tread and the wide shoulder grooves are effective self-cleaning with maximum traction. It is also suitable for MPT (Multipurpose trucks).

Tire Size	TRA Code	TD (mm)	ISO Index			Stuffing Qty/40HQ
335/80R20 MPT (12.5R20)	E2/L2	18.3	141 J	136 B	147 A2	—
365/80R20 MPT (14.5R20)	E2/L2	19.8	152 J	141 B	153 A2	—
405/70R20 MPT (16/70R20)	E2/L2	19	152 J	143 B	155 A2	—

***Compound Option: H1**



ETSC™



The Techking ETSC (L3) radial OTR tires designed for span carriers that serves to transport precast-concrete spans from the precast yard to the installation site. It also can use on loaders & dozers.

Tire Size	TRA Code	Star Rating	TD (mm)	ISO Index	Stuffing Qty/40HQ
26.5R25	L3	★★★	24	211 A2	35

***Compound Option: R1**

Techking Tire Compound Symbol:

C1=Cut resistant: resistant to cut, tread tearing and abrasion on rough surface.

(mainly for mining, quarry area, Loader, Dozer, Truck application)

R1=Standard Compound: Compromise solution between abrasion resistance and average speed on well maintained road.

(mainly for articulated dump truck, loader & dozer application in construction area)

H2=Heat Resistant: for running on long cycles at high speed on well maintained road

(mainly for rigid dump truck application)

H1=High Speed Compound: Very high heating resistance at high speed on long cycles run on well maintained road.

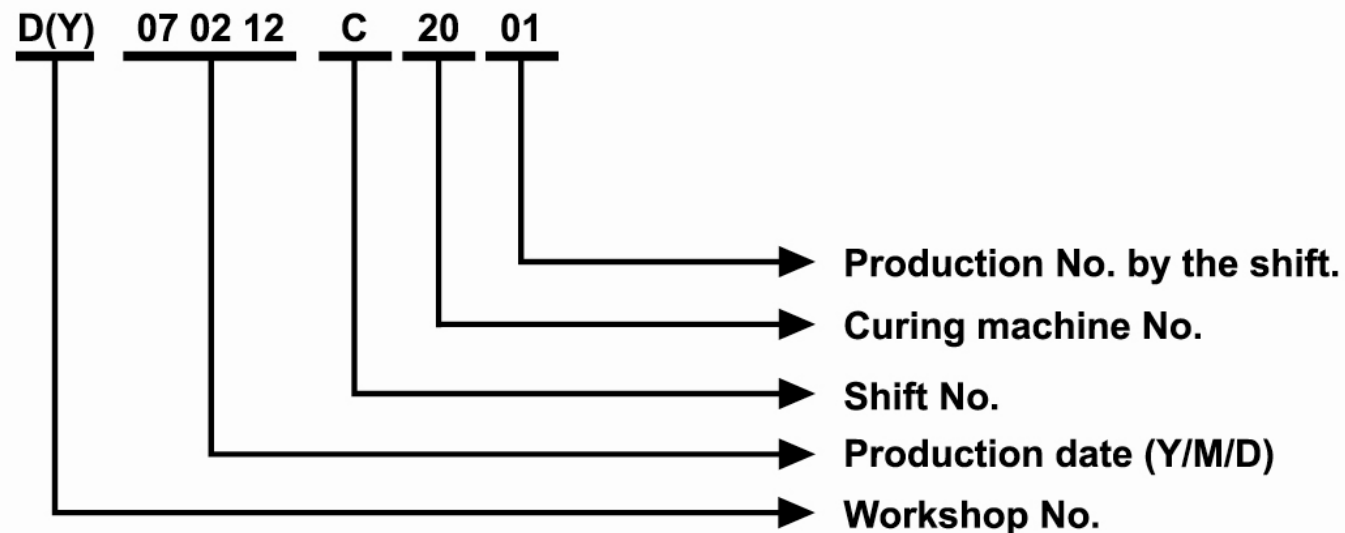
(mainly for mobile crane application)

SNOW: Specially designed for winter, more suitable for ice & snow surface.

(mainly for mobile crane, loaders, ADT, graders)

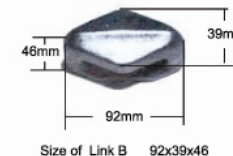
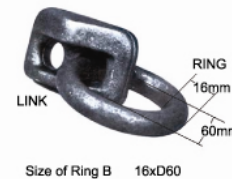
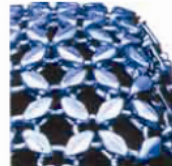
Note: All tires are tubeless type, except as otherwise noted.

Techking tire serial number illustration:



Specifications of OTR Tyre Protection Chain

S/N	Tyre Size	Size of Link O Size of Ring O	Weight O (kg)	Size of Link A Size of Ring A	Weight A (kg)	Size of Link B Size of Ring B	Weight B (kg)	Size of Link C Size of Ring C	Weight C (kg)
1	17.5-25	76*33*38 13*D50	212	78*40*42 14*D50	250	92*39*46 16*D60	----	92*46*52 16*D60	370
2	20.5-25	76*33*38 13*D50	270	78*40*42 14*D50	323	92*39*46 16*D60	378	92*46*52 16*D60	470
3	23.5-25	76*33*38 13*D50	320	78*40*42 14*D50	383	92*39*46 16*D60	480	92*46*52 16*D60	520



S/N	Tyre Size	Size of Link B Size of Ring B	Weight B (kg)	Size of Link C Size of Ring C	Weight C (kg)	Size of Link D Size of Ring D	Weight D (kg)	Size of Link E Size of Ring E	Weight E (kg)	Size of Link F Size of Ring F	Weight F (kg)
4	26.5-25	92X39X46 16XD60	516	92X46X52 16XD60	584	104X52X65 18XD68	786	108X53X68 20XD68	943		
5	29.5-25	92X39X46 16XD60	660	92X46X52 16XD60	755	104X52X65 18XD68	951	108X53X68 20XD68	---		
6	29.5-29	92X39X46 16XD60	700	92X46X52 16XD60	800	104X52X65 18XD68	1006	108X53X68 20XD68	1244		
7	35/65-33	92X39X46 16XD60	788	92X46X52 16XD60	892	104X52X65 18XD68	1130	108X53X68 20XD68	1356		
8	40*65-39							108X53X68 20XD68	1884		
9	45/65-39									120X50X72 22XD76	2418
10	45/65-45							108X53X68 20XD68	2400	120X50X72 22XD76	2540
11	52/80-57									120X50X72 22XD76	4920
12	65/65-57									120X50X72 22XD76	4920

Five Pieces Rim (fitted with center disc)

Models (A-C/B)	Parameters								Recommended tires	Remarks
	Disc			Attachment holes						
	D	E	F	H	G	Holes	Diameter	Spherical surface		
25-14.00/1.5	35.5	394	530	12	450	12	21.5		17.5x25TL	30G
25-17.00/2.0	110	448.5	565	15	520	12	21.5		20.5x25TL	40G
25-19.50/2.5	-5	370	500	15	425	12	27	SR18	23.5x25TL	50G
25-19.50/2.5	55	281	400	20	335	10	27	SR18	23.5x25TL	
25-19.50/2.5	90	372	500	16	425	12	26		23.5x25TL	
25-13.00/2.5	-13	350	480	25	400	16	22		18.00x25TL	
25-22.00/3.0	54.5	456	560	20	495	25	22		26.5x25TL	
25-22.00/3.0	-11	370	480	22	425	20	24		26.5x25TL	
25-25.00/3.5	206	448	550	25	500	19	27	SR18	29.5x25TL	80G
25-25.00/3.5									29.5x25TL	

Five Pieces Rim (28°assembly)

Models(A-C/B)	Parameters			Recommended tires	Remarks
	D	E	F		
25-11.25/2.0	544	40	576	16.00x25TL	
25-13.00/2.5	520	15	576	18.00x25TL	
25-13.00/2.5	548	35	574.5	18.00x25TL	
25-13.00/2.5	548	35	574.5	18.00x25TL	
25-13.00/2.5	546	32	574.5	18.00x25TL	Container Front Carrier
25-15.00/3.0	545	85	574.5	21.00x25TL	Container Front Carrier
51-26.00/5.0	1149	100	1208	36.00x51TL	

Special Wheels

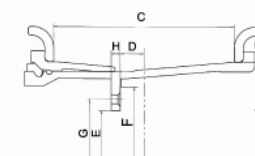
Models(A-C/B)	Recommended tires	Number
25-13.00/2.5	18.00x25TL	RTG
25-13.00/2.5	18.00x25TL	RTG
25-13.00/2.5	18.00x25TL	RTG
25-15.00/3.0	21.00x25TL	RTG
25-15.00/3.0	21.00x25TL	RTG



Five pieces



Three pieces



Techking Tires in the Field



Recognized OE partner of Moxxy



29.5R25 ET6A on VOLVO A40D in Portugal



29.5R25 ET6A on KOMATSU WA500 in Spain



16.00R25 ETGC on Crane in USA



23.5R25 ET5A on BELL B30 in SA



23.5R25 ET5A on CAT 950G in Spain



20.5R25 ET5A on DUVAS-UNI Scraper in Czech



29.5R25 ETADT in Vietnam



26.5R25 ETADT on Volvo 35D in Russia



The 1st Chinese radial OTR tire entering Japan market



20.5R25 ET5A, 26.5R25 ET6A & 29.5R25 ET6A on CAT 950/ 966/ 980 in Egypt



14.00R25/16.00R25 ETGC on LIEBHERR mobile crane in Latvia

Advanced Manufacturing Facilities



Four-Drum Building Machine



Steel Cord Spindle Room



Laboratory



Single-Mold Curing Machine

Certificates



TIA Membership Certificate



SEMA Membership Certificate



ISO 9001 Certificate