

Techking Tires in The Worldwide Market



Recognized OE partner of Moxy



29.5R25 ET6A on VOLVO A40D in Portugal



29.5R25 ET6A on KOMATSU WA500 in Spain



18.00R25 ETGC on Crane in USA



23.5R25 ET5A on BELL B30 in SA



23.5R25 ET5A on CAT 950G in Spain



20.5R25 ET5A on DUVAS-UNI Scraper in Czech



29.5R25 ETADT in Vietnam



26.5R25 ETADT on Volvo 35D in Russia

**TECHKING™**  
Right Tire to Right Application




Local Distributor:

## TRA CLASSIFICATION OFF-THE-ROAD TIRES

TRA CODE	TREAD TYPE	TECHKING TREAD PATTERN	MAXIMUM	
			SPEED	DISTANCE(ONE WAY)
<b>E=EARTHMOVING (Haulage service)</b>				
E-1	Rib Regular		65km/h(40mph)	4km(2.5mi.)
E-2	Traction Reguar	ETSNOW ETGC ETMPT1	65km/h(40mph)	4km(2.5mi.)
E-3	Rock Reguar	ET5A ET6A ETADT	65km/h(40mph)	4km(2.5mi.)
E-4	Rock Deep Tread	ETADT ETDT ETDR ETRT ETHAUL ETNT ETLB	65km/h(40mph)	4km(2.5mi.)
E-7	Flotation		65km/h(40mph)	4km(2.5mi.)
<b>L=LOADER AND DOZER (Slow speed service)</b>				
L-2	Traction Reguar	ETSNOW EGRADER ETMPT1	10km/h(5mph)	76m(250ft.)
L-3	Rock Reguar	ET5A ET6A ETADT ETSC	10km/h(5mph)	76m(250ft.)
L-4	Rock Deep Tread	ETDL ETNT	10km/h(5mph)	76m(250ft.)
L-5	Rock Extra Deep Tread	ETMINE ETDL5 ETLDD2	10km/h(5mph)	76m(250ft.)
L-3S	Smooth Regular		10km/h(5mph)	76m(250ft.)
L-4S	Smooth Deep Tread		10km/h(5mph)	76m(250ft.)
L-5S	Smooth Extra Deep Tread	ETSM	10km/h(5mph)	76m(250ft.)
<b>G=GRADER</b>				
G-1	Rib Regular		40km/h(25mph)	Unlimited
G-2	Traction Reguar	ETGRADER	40km/h(25mph)	Unlimited
G-3	Rock Reguar		40km/h(25mph)	Unlimited
G-4	Rock Deep Tread		40km/h(25mph)	Unlimited
<b>C=COMPACTOR</b>				
C-1	Smooth		10km/h(5mph)	Unlimited
C-2	Grooved		10km/h(5mph)	Unlimited

# ABOUT TECHKING

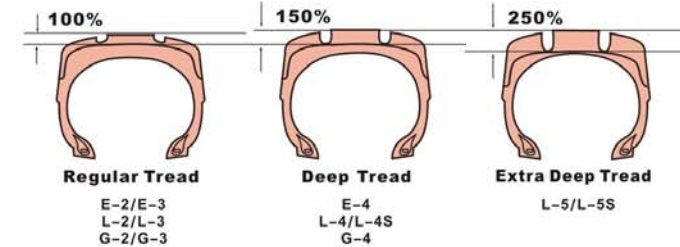
Techking Tires Limited is determined to be a professional OTR tires solution provider. Thanks to its strong engineering sources integration capacity, Techking offers the most complete radial OTR tire line in China, covering the application for loader, dozer, ADT, rigid dumper, crane, port, underground mining.

Techking attaches the greatest importance to product quality through building partnership with best-in-class suppliers. Techking sources all its steel cord from Bekaert of Belgium, the natural rubber only from Malaysia or Thailand origin, only SMR grade and the carbon black only from Cabot, USA. @ **BEKAERT** 

Techking wishes to build win-win cooperation with selective top industry players in each territory. Instead of soliciting orders from whoever can place an order, Techking selects the right partners and supports each other to win a better position in the industry. Techking develops different programs for and interacts intensively with its partners to grow together.

With the products sold to 55 countries in the world, Techking Tires Limited has been proving its commitment and capability with many influential overseas partners. Techking has been also serving OE partners such as **NOXY** (Norway), **BELL** (South Africa), **LIEBHERR** (Germany), **VOGELLE** (Germany) and **SKIDSTEER** (Sweden). For more information, please visit the website at [www.techkingtires.com](http://www.techkingtires.com)

Techking, the professional OTR tire solution provider.



## EARTHMOVER SERVICE



Sizes	ETSNOW™	ETMPT1™	ET5A™	ET6A™	ETADT™	ETDT™	ETDR™	ETNT™	ETHAUL™	ETRT™	ETLB™
TRA Code	E2	E2	E3	E3	E3/E4	E4	E4	E4	E4	E4	E4
Page	8	12	6	6	7	6	7	8	8	7	12
335/80R20 MPT (12.5R20)		R1									
365/80R20 MPT (14.5R20)		R1									
405/70R20 MPT (16/70R20)		R1									
405/70R24 MPT (16/70R20)		R1									
14.00R25											H2
15.5R25	SNOW										
17.5R25	SNOW		R1								
18.00R25										H2	H2
20.5R25	SNOW		R1								
23.5R25	SNOW		R1	C1/R1	H2						
600/65R25					H2						
650/65R25					H2						
750/65R25					H2						
26.5R25	SNOW		R1	C1/R1	H2			H2			
850/65R25					H2						
29.5R25	SNOW			C1/R1	H2			H2			
29.5R29				C1/R1	H2			H2			
875/65R29					H2						
18.00R33					H2	H2				H2	
21.00R33										H2	
35/65R33									H2		
21.00R35					H2	H2					
24.00R35					H2	H2					
27.00R49											H2
30.00R51											H2
33.00R51											H2
36.00R51											H2
37.00R57											H2
40.00R57											H2

## LOADER & DOZER SERVICE



Sizes	ETSNOW™	ETGRADER™	ETMPT1™	ET5A™	ET6A™	ETSC™	ETADT™	ETNT™	ETDL™	ETDL5™	ETLDD2™	ETMINE™	ETSM™
TRA Code	L2	L2	L2	L3	L3	L3	L3	L4	L4	L5	L5	L5	L5S
Page	8	10	12	6	6	10	7	8	9	9	9	11	10
335/80R20 MPT (12.5R20)			R1										
365/80R20 MPT (14.5R20)			R1										
405/70R20 MPT (16/70R20)			R1										
405/70R24 MPT (16/70R20)			R1										
12.00R20												C1	C1
12.00R24												C1	C1
13.00R24		R1											
14.00R24		R1										C1	C1
15.5R25													
16.00R25												C1	C1
17.5R25	SNOW			R1						C1			C1
18.00R25													C1
20.5R25	SNOW			R1						C1	C1		C1
23.5R25	SNOW			R1	C1				C1	C1	C1		C1
600/65R25													
650/65R25													
750/65R25													
26.5R25	SNOW			R1	C1	R1			C1	C1	C1	C1	C1
850/65R25													
29.5R25	SNOW											C1	C1
29.5R29												C1	C1
875/65R29													
18.00R33												C1	
35/65R33												C1	C1

## HIGHWAY SERVICE



**ETGC**

Sizes		ETGC™
TRA Code	E2	
Page	11	
385/95R24 (14.00R24)	H1	
385/95R25 (14.00R25)	H1	
445/95R25 (16.00R25)	H1	
505/95R25 (18.00R25)	H1	
445/80R25 (17.5R25)	H1	
525/80R25 (20.5R25)	H1	



**ET5A™**



The versatile E3/L3 radial tires designed for earthmovers, loaders and other equipment used in construction, stockpile and truck-loading applications.

Size	TRA Code	Star Rating	Rim Width & Flange	Tread Depth		Tyre Inflated Dimension				Load Index/ Speed Symbol	Volume m3	Type	
				32nds	mm	Section Width		Overall Diameter					
				in	mm	in	mm	in	mm				
17.5R25	E3/L3	★★	14.00-1.5	33	26.5	17.52	445	53.07	1348	167 B	182 A2	0.81	TL
20.5R25	E3/L3	★★	17.00-2.0	37	29.5	20.51	521	58.66	1490	177 B	193 A2	1.16	TL
23.5R25	E3/L3	★★	19.50-2.5	41	32.5	23.50	597	63.66	1617	185 B	201 A2	1.56	TL
26.5R25	E3/L3	★★	22.00-3.0	44	35.5	26.50	673	68.90	1750	193 B	209 A2	2.06	TL

## GRADER SERVICE



**ETGRADER**

Sizes		ETGRADER™
TRA Code	G2	
Page	10	
13.00R24	R1	
14.00R24	R1	
16.00R24	R1	



**ET6A™**



The Techking E3/L3 radial tires for articulated trucks designed to deliver exceptional reliability in a variety of applications.

Size	TRA Code	Star Rating	Rim Width & Flange	Tread Depth		Tyre Inflated Dimension				Load Index/ Speed Symbol	Volume m3	Type	
				32nds	mm	Section Width		Overall Diameter					
				in	mm	in	mm	in	mm				
23.5R25	E3/L3	★★	19.50-2.5	41	32.5	23.50	597	63.66	1617	185 B	201 A2	1.56	TL
26.5R25	E3/L3	★★	22.00-3.0	44	35.5	26.50	673	68.90	1750	193 B	209 A2	2.06	TL
29.5R25	E3/L3	★★	25.00-3.5	53	42	29.49	749	73.74	1873	200 B	216 A2	2.63	TL
29.5R29	E3/L3	★★	25.00-3.5	54	43.5	29.49	749	77.76	1975	202 B	218 A2	2.92	TL

## TRUCK SERVICE



**ETOT**



**ETMPT1**

Sizes		ETOT™	ETMPT1™
Application	Logging & Mining Truck	MPT	
Page	12	12	
12.00R24	H1		
335/80R20 MPT (12.5R20)			R1
365/80R20 MPT (14.5R20)			R1
405/70R20 MPT (16/70R20)			R1
405/70R24 MPT (16/70R20)			R1



**ETDT™**



The Techking extra deep E4 rigid dump truck tires, designed with an aggressive tread pattern that provide maximum traction in all underfoot conditions.

Size	TRA Code	Star Rating	Rim Width & Flange	Tread Depth		Tyre Inflated Dimension				Load Index/ Speed Symbol	Volume m3	Type	
				32nds	mm	Section Width		Overall Diameter					
				in	mm	in	mm	in	mm				
18.00R33	E4	★★	13.00-2.5	66	52.5	19.61	498	73.90	1877	191 B	—	1.75	TL
21.00R35	E4	★★	15.00-3.0	74	59.5	22.52	572	80.79	2052	201 B	—	2.41	TL
24.00R35	E4	★★	17.00-3.5	83	66.5	25.71	653	85.63	2175	209 B	—	3.09	TL



## ETADT™



The ETADT pattern provides great traction and floatation, operation comfort and less vehicle damage.

Size	TRA Code	Star Rating	Rim Width & Flange	Tread Depth		Tyre Inflated Dimension				Load Index/ Speed Symbol	Volume m3	Type	
						Section Width		Overall Diameter					
				32nds	mm	in	mm	in	mm				
23.5R25	E4	★★	19.50-2.5	59	47	23.50	597	65.87	1673	185 B	—	1.67	TL
26.5R25	E4	★★	22.00-3.0	66	52.5	26.50	673	70.79	1798	193 B	—	2.18	TL
29.5R25	E4	★★	25.00-3.5	69	55.5	29.49	749	75.63	1921	200 B	—	2.76	TL
29.5R29	E4	★★	25.00-3.5	74	59.5	29.49	749	79.65	2023	202 B	—	3.07	TL
16.00R25	E4	★★	11.25-2.0	52	41.5	17.01	432	60.94	1548	177 B	—	1.04	TL
600/65R25	E3/L3	MS	19.50-2.5	43	34	23.86	606	55.71	1415	178 B	187 A2	1.21	TL
650/65R25	E3/L3	MS	19.50-2.5	46	37	25.20	640	58.27	1480	180 B	193 A2	1.40	TL
750/65R25	E3/L3	MS	24.00-3.0	54	43	29.06	738	62.95	1599	190 B	202 A2	1.89	TL
850/65R25	E3/L3	MS	25.00-3.5	59	47	33.54	852	68.50	1740	196 B	207 A2	2.58	TL
875/65R29	E3/L3	MS	27.00-3.0	64	51	34.76	883	74.06	1881	203 B	214 A2	3.12	TL

Note: MS=★★★



## ETDR™



The radial E4 tires for haul trucks designed to deliver long life, maximum protection and excellent traction in the most severe mines and quarry conditions.

Size	TRA Code	Star Rating	Rim Width & Flange	Tread Depth		Tyre Inflated Dimension				Load Index/ Speed Symbol	Volume m3	Type	
						Section Width		Overall Diameter					
				32nds	mm	in	mm	in	mm				
18.00R33	E4	★★	13.00-2.5	66	52.5	19.61	498	73.90	1877	191 B	—	1.75	TL
21.00R35	E4	★★	15.00-3.0	66	52.5	22.52	572	80.79	2052	201 B	—	2.41	TL
24.00R35	E4	★★	17.00-3.5	71	56.5	25.71	653	85.63	2175	209 B	—	3.09	TL



## ETRT™



The Techking E4 radial tires for dump trucks designed to provide excellent adhesion and traction in severe conditions. 14.00R25 is also designed particularly for logging trucks.

Size	TRA Code	Star Rating	Rim Width & Flange	Tread Depth		Tyre Inflated Dimension				Load Index/ Speed Symbol	Volume m3	Type	
						Section Width		Overall Diameter					
				32nds	mm	in	mm	in	mm				
14.00R25	E4	★★★	10.00-1.5	46	36.5	15.08	383	55.83	1418	168 B	—	0.77	TL
18.00R25	E4	★★	13.00-2.5	57	45.5	19.61	498	65.87	1673	185 B	—	1.39	TL



## ETSNOW™



The all-season Techking radial tires designed for on graders, loaders and cranes where exceptional traction on snow and ice is required.

Size	TRA Code	Star Rating	Rim Width & Flange	Tread Depth		Tyre Inflated Dimension				Load Index/ Speed Symbol	Volume m3	Type	
						Section Width		Overall Diameter					
				32nds	mm	in	mm	in	mm				
15.5R25	E2/L2	★★	12.00-1.3	30	24	15.51	394	50.28	1277	160 B	176 A2	0.64	TL
17.5R25	E2/L2	★★	14.00-1.5	33	26.5	17.52	445	53.07	1348	167 B	182 A2	0.81	TL
20.5R25	E2/L2	★★	17.00-2.0	37	29.5	20.51	521	58.66	1490	177 B	193 A2	1.16	TL
23.5R25	E2/L2	★★	19.50-2.6	41	32.5	23.50	597	63.66	1617	185 B	201 A2	1.56	TL
26.5R25	E2/L2	★★	22.00-3.0	44	35.5	26.50	673	68.90	1750	193 B	209 A2	2.06	TL
29.5R25	E2/L2	★★	25.00-3.5	53	42	29.49	749	73.74	1873	200 B	216 A2	2.63	TL
16.00R25	E2	★★★	11.25-2.0	33	26.5	17.01	432	58.78	1493	—	179 E	0.96	TL



## ETHAUL™



The Techking E4 radial tires for haul trucks operating at high speed designed to provide excellent protection and long wear in harsh conditions.

Size	TRA Code	Star Rating	Rim Width & Flange	Tread Depth		Tyre Inflated Dimension				Load Index/ Speed Symbol	Volume m3	Type	
						Section Width		Overall Diameter					
				32nds	mm	in	mm	in	mm				
18.00R25	E4	★★	13.00-2.5	57	45.5	19.61	498	65.87	1673	185 B	—	1.39	TL
18.00R33	E4	★★	13.00-2.5	57	45.5	19.61	498	73.90	1877	191 B	—	1.75	TL
21.00R33	E4	★★	15.00-3.0	64	51.5	22.48	571	78.78	2001	200 B	—	2.29	TL



## ETNT™



The Techking new ETNT is designed for wheel loaders operating in quarry or mining which requires certain longitudinal traction. It has deep tread for shuttle truck in underground mine.

Size	TRA Code	Star Rating	Rim Width & Flange	Tread Depth		Tyre Inflated Dimension				Load Index/ Speed Symbol	Volume m3	Type	
						Section Width		Overall Diameter					
				32nds	mm	in	mm	in	mm				
26.5R25	E4/L4	★★	22.00-3.0	69	55.5	26.50	673	70.79	1798	193 B	209 A2	2.18	TL
29.5R25	E4/L4	★★	25.00-3.5	69	55.5	29.49	749	75.63	1921	200 B	216 A2	2.76	TL
29.5R29	E4/L4	★★	25.00-3.5	75	60	29.49	749	79.65	2023	202 B	218 A2	3.07	TL
35/65R33	E4/L4	★★	28.00-3.5	78	62.5	34.65	880	81.69	2075	207 B	224 A2	3.79	TL



### ETDL™



The ETDL radial tires designed for severe and rocky surfaces guarantee good traction, stability and comfortable ride.

Size	TRA Code	Star Rating	Rim Width & Flange	Tread Depth		Tyre Inflated Dimension				Load Index/ Speed Symbol	Volume m3	Type	
						Section Width		Overall Diameter					
				32nds	mm	in	mm	in	mm				
23.5R25	L4	★★	19.50-2.5	62	49.5	23.50	597	65.87	1673	—	201 A2	1.67	TL
26.5R25	L4	★★	22.00-3.0	73	58.5	26.50	673	70.79	1798	—	209 A2	2.18	TL



### ETDL5™



The ETDL5 is perfect for heavy-duty operations in open pits, quarries and underground mines. The sidewalls provide extended protection from cutting.

Size	TRA Code	Star Rating	Rim Width & Flange	Tread Depth		Tyre Inflated Dimension				Load Index/ Speed Symbol	Volume m3	Type	
						Section Width		Overall Diameter					
				32nds	mm	in	mm	in	mm				
17.5R25	L5	★★	14.00-1.5	83	66.5	17.52	445	55.08	1399	—	182 A2	0.87	TL
20.5R25	L5	★★	17.00-2.0	96	76.5	20.51	521	60.94	1548	—	193 A2	1.25	TL
23.5R25	L5	★★	19.50-2.5	107	85.5	23.50	597	65.87	1673	—	201 A2	1.67	TL
26.5R25	L5	★★	22.00-3.0	118	94.5	26.50	673	70.79	1798	—	209 A2	2.18	TL
29.5R25	L5	★★	25.00-3.5	128	102.5	29.49	749	75.63	1921	—	216 A2	2.76	TL
29.5R29	L5	★★	25.00-3.5	128	102.5	29.49	749	79.65	2023	—	218 A2	3.07	TL
35/65R33	L5	★	28.00-35	119	95.5	34.65	880	81.69	2075	—	224 A2	3.79	TL



### ETLDD2™



The directional radial tires for wheel loaders designed to provide high levels of stability, traction and protection combined with a cushioned ride for operator comfort.

Size	TRA Code	Star Rating	Rim Width & Flange	Tread Depth		Tyre Inflated Dimension				Load Index/ Speed Symbol	Volume m3	Type	
						Section Width		Overall Diameter					
				32nds	mm	in	mm	in	mm				
20.5R25	L5	★★	17.00-2.0	90	72	20.51	521	60.94	1548	—	193 A2	1.25	TL
23.5R25	L5	★★	19.50-2.5	96	76.5	23.50	597	65.87	1673	—	201 A2	1.67	TL
26.5R25	L5	★★	22.00-3.0	107	85.5	26.50	673	70.79	1798	—	209 A2	2.18	TL
29.5R25	L5	★★	25.00-3.5	117	93.5	29.49	749	75.63	1921	—	216 A2	2.76	TL
29.5R29	L5	★★	25.00-3.5	117	93.5	29.49	749	79.65	2023	—	218 A2	3.07	TL
35/65R33	L5	★	28.00-35	119	95.5	34.65	880	81.69	2075	—	224 A2	3.79	TL



### ETSM™



The super-deep, smooth Techking L5S designed with maximum wear and reliability for wheel loaders and haulers working in severe mines, quarries and waste-handling conditions.

Size	TRA Code	Star Rating	Rim Width & Flange	Tread Depth		Tyre Inflated Dimension				Load Index/ Speed Symbol	Volume m3	Type	
						Section Width		Overall Diameter					
				32nds	mm	in	mm	in	mm				
17.5R25	L5S	★★	14.00-1.5	96	76.5	17.52	445	55.08	1399	—	182 A2	0.87	TL
20.5R25	L5S	★★	17.00-2.0	96	76.5	20.51	521	60.94	1548	—	193 A2	1.25	TL
23.5R25	L5S	★★	19.50-2.5	111	88.5	23.50	597	65.87	1673	—	201 A2	1.67	TL
26.5R25	L5S	★★	22.00-3.0	126	100.5	26.50	673	70.79	1798	—	209 A2	2.18	TL
29.5R25	L5S	★★	25.00-3.5	138	110.5	29.49	749	75.63	1921	—	216 A2	2.76	TL
29.5R29	L5S	★★	25.00-3.5	138	110.5	29.49	749	79.65	2023	—	218 A2	3.07	TL
35/65R33	L5S	★	28.00-35	121	97	34.65	880	81.69	2075	—	224 A2	3.79	TL
12.00R20	L5S	★★	8.50-1.3	71	57	12.40	315	44.65	1134	—	154 A2	0.41	TL
12.00R24	L5S	★★	8.50-1.3	71	57	12.40	315	50.20	1275	—	175 A2	0.51	TL
14.00R24	L5S	★★	10.00-1.5	73	58	14.76	375	55.83	1418	—	186 A2	0.75	TL
16.00R25	L5S	★★	11.25-2.0	91	73	17.01	432	60.94	1548	—	195 A2	1.04	TL
18.00R25	L5S	★★	13.00-2.5	117	93.5	19.61	498	65.87	1673	—	204 A2	1.39	TL



### ETSC™



The Techking ETSC (L3) radial OTR tires designed for span carriers that serves to transport precast-concrete spans from the precast yard to the installation site. It also can use on loaders & dozers.

Size	TRA Code	Star Rating	Rim Width & Flange	Tread Depth		Tyre Inflated Dimension				Load Index/ Speed Symbol	Volume m3	Type	
						Section Width		Overall Diameter					
				32nds	mm	in	mm	in	mm				
26.5R25	L3	★★	22.00-3.0	30	24	26.50	673	68.90	1750	—	209 A2	2.06	TL



### ETGRADER™



The Techking ETGRADER(G2/L2) radial tires designed with aggressive, nondirectional tread pattern to give graders maximum traction and grip capacity.

Size	TRA Code	Star Rating	Rim Width & Flange	Tread Depth		Tyre Inflated Dimension				Load Index/ Speed Symbol	Volume m3	Type	
						Section Width		Overall Diameter					
				32nds	mm	in	mm	in	mm				
13.00R24	G2/L2	★★	8.00-1.4	31	25	13.11	333	50.31	1278	—	146 A8	0.54	TL
14.00R24	G2	★★	8.00-1.4	31	25	14.25	362	53.07	1348	—	153 A8	0.66	TL
16.00R24	G2	★★	10.00-1.7	34	27	16.81	427	57.44	1459	—	161 A8	0.91	TL



## ETMINE™



This rugged Techking extra-deep tread(L5)ETMINE designed to give the vehicles maximum protection in severe hard rock quarries, underground mines, scrap and solid-waste treatment.

Size	TRA Code	Star Rating	Rim Width & Flange	Tread Depth		Tyre Inflated Dimension				Load Index/ Speed Symbol		Volume m3	Type
						Section Width		Overall Diameter					
				32nds	mm	in	mm	in	mm				
26.5R25	L5	★★	22.00-3.0	112	89.5	26.50	673	70.79	1798	—	209 A2	2.18	TL
12.00R20	L5	★★	8.50-1.3	71	57	12.40	315	44.65	1134	—	154 A2	0.41	TL
12.00R24	L5	★★	8.50-1.3	71	57	12.40	315	50.20	1275	—	175 A2	0.51	TL
14.00R24	L5	★★	10.00-1.5	73	58	14.76	375	55.83	1418	—	186 A2	0.75	TL
16.00R25	L5	★★	11.25-2.0	91	73	17.01	432	60.94	1548	—	195 A2	1.04	TL
18.00R33	L5	★★	13.00-2.5	119	95	19.61	498	73.90	1877	—	209 A2	1.75	TL



## ETLB™



Rock-deep tread with tough lug and sidewall protectors. Specially designed for large dump trucks engaged in earthmoving. High resistance to cutting and chipping for long tread life.

Size	TRA Code	Star Rating	Rim Width & Flange	Tread Depth		Tyre Inflated Dimension				Load Index/ Speed Symbol		Volume m3	Type
						Section Width		Overall Diameter					
				32nds	mm	in	mm	in	mm				
27.00R49	E4	★★	19.50-4.0	83	66.5	29.02	737	106.38	2702	223 B	—	5.38	TL
30.00R51	E4	★★	22.00-4.5	93	74.5	32.40	823	114.33	2904	230 B	—	6.94	TL
33.00R51	E4	★★	24.00-5.0	98	78.5	35.20	894	120.51	3061	235 B	—	8.38	TL
36.00R51	E4	★★	26.00-5.0	108	86.5	38.90	988	127.28	3233	241 B	—	10.33	TL
37.00R57	E4	★★	27.00-6.0	109	87.5	40.00	1016	135.35	3438	246 B	—	12.01	TL
40.00R57	E4	★★	29.00-6.0	114	91.5	43.19	1097	141.50	3594	250 B	—	14.17	TL



## ETGC™



The non-directional radial tires designed to deliver exceptional operator comfort and durability in high-speed and for on- and off-road crane applications.

Size	TRA Code	Star Rating	Rim Width & Flange	Tread Depth		Tyre Inflated Dimension				Load Index/ Speed Symbol		Volume m3	Type
						Section Width		Overall Diameter					
				32nds	mm	in	mm	in	mm				
385/95R24 (14.00R24)	E2	★★★	10.00W	26	20.5	15.04	382	53.86	1368	—	170 F	0.71	TL
385/95R25 (14.00R25)	E2	★★★	10.00-1.5	26	20.5	15.04	382	53.86	1368	—	170 F	0.71	TL
445/95R25 (16.00R25)	E2	★★★	11.25-2.0	33	26.5	17.01	432	58.78	1493	—	174 F	0.96	TL
505/95R25 (18.00R25)	E2	★★★	13.00-2.5	33	26.5	19.61	498	63.58	1615	—	186 E	1.30	TL
445/80R25 (17.5R25)	E2	★★★	14.00-1.5	33	26.5	17.52	445	53.07	1348	—	170 E	0.81	TL
525/80R25 (20.5R25)	E2	★★★	17.00-2.0	37	29.5	20.51	521	58.66	1490	—	179 E	1.16	TL



## ETOT™



The Techking new ETOT high capacity tube-type tires designed for mostly off-road application such as mining and logging. Massive tread blocks offer exceptional resistance to cuts and penetrations. Open shoulders designed for improved self-cleaning capability enhance soft soil mobility.

Size	Ply Rating	Rim Width & Flange	Tread Depth		Tyre Inflated Dimension				Load Capacity		Volume m3	Type
			32nds	mm	Section Width		Overall Diameter		Kg			
			in	mm	in	mm	in	mm	Single	Dual		
12.00R24	18 20	8.5	40	32	12.40	315	49.09	1247	4250 3875 4500 4000	0.49	TT	



## ETSS™



The ETSS radial tires with open shoulders designed for skid steer loaders. Saving costs and extremely performance due to the compound composition.

Size	TRA Code	Star Rating	Rim Width & Flange	Tread Depth		Tyre Inflated Dimension				Load Index/ Speed Symbol		Volume m3	Type
						Section Width		Overall Diameter					
				32nds	mm	in	mm	in	mm				
10R16.5	L3	★★	8.25	23	18.5	10.39	264	30.43	773	—	128 A5	0.16	TL
12R16.5	L3	★★	9.75	29	23	12.40	315	32.76	832	—	141 A5	0.22	TL



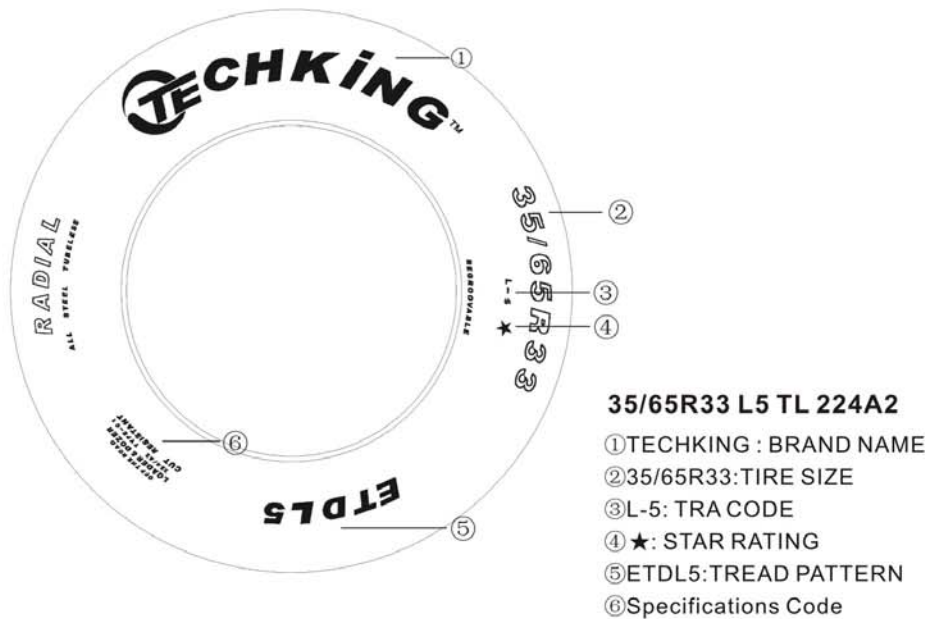
## ETMPT1™



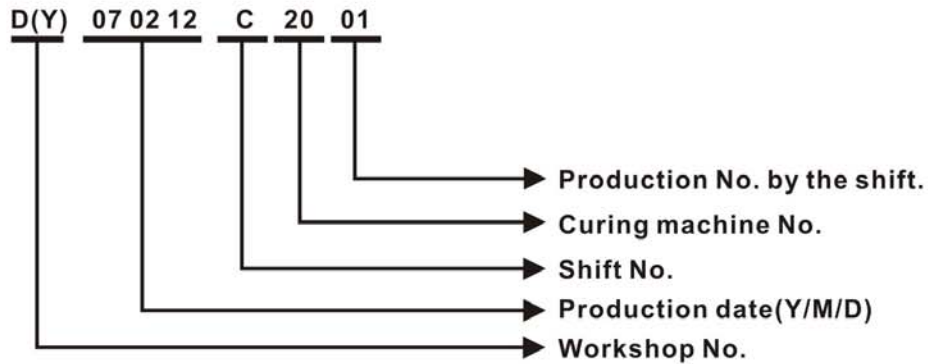
The open & Non-directional tread pattern design for all-round application on and off the road. The open face tread The wide shoulder grooves are effective self-cleaning for maximum traction. Also suitable above all for multipurpose trucks (MPT). Note: MPT= Multipurpose Trucks

Size	TRA Code	Rim Width & Flange	Tread Depth		Tyre Inflated Dimension				Load Index/ Speed Symbol			Volume m3	Type
					Section Width		Overall Diameter		MPT	EM	L & D		
			32nds	mm	in	mm	in	mm					
335/80R20 MPT (12.5R20)	E2/L2	11.00	23	18.3	13.39	340	41.10	1044	141 J	136 B	147 A2	0.37	TL
365/80R20 MPT (14.5R20)	E2/L2	11.00	25	19.8	14.17	360	42.99	1092	152 J	141 B	147 A2	0.43	TL
405/70R20 MPT (16/70R20)	E2/L2	13.00	24	19	16.02	407	42.36	1076	141 J	136 B	147 A2	0.47	TL
405/70R24 MPT (16/70R20)	E2/L2	13.00	24	19	16.02	407	46.38	1178	141 J	136 B	147 A2	0.56	TL

## EXAMPLE OF MARKINGS



## TECHKING TIRE SERIAL NUMBER ILLUSTRATION:



## CONVERSION TABLE: STAR RATING TO PLY RATING

Service	Tire Size	Star Rating	Corresponding Ply Rating
<b>Earthmover</b>	14.00R24	★★★	up to 32
	14.00R25	★★★	up to 32
	16.00R25	★★	up to 36
	18.00R25	★	up to 24
		★★	up to 36
	18.00R33	★★	up to 40
	21.00R33	★★	up to 36
	21.00R35	★★	up to 44
	24.00R35	★★	up to 48
	24.00R49	★★	up to 48
	27.00R49	★★	up to 54
	30.00R51	★★	up to 58
	33.00R51	★★	up to 64
	36.00R51	★★	up to 66
	40.00R57	★★	up to 74
	17.5R25	★★	up to 20
	20.5R25	★★	up to 28
	23.5R25	★★	up to 32
	26.5R25	★★	up to 32
	29.5R25	★★	up to 34
29.5R29	★★	up to 40	

Service	Tire Size	Star Rating	Corresponding Ply Rating
<b>Grader</b>	14.00R24	★	up to 16
	16.00R24	★	up to 16
	17.5R25	★	up to 16
<b>Loader</b>	20.5R25	★★	up to 28
	23.5R25	★★	up to 32
	26.5R25	★★	up to 36
	29.5R25	★★	up to 34
	35/65R33	★	up to 36